



DNAM-1 Polyclonal Antibody

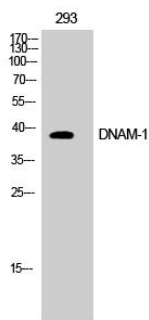
| | |
|---------------------------|---|
| Catalog No | YP-Ab-17014 |
| Isotype | IgG |
| Reactivity | Human;Mouse;Monkey |
| Applications | WB;IHC;IF;ELISA |
| Gene Name | CD226 |
| Protein Name | CD226 antigen |
| Immunogen | The antiserum was produced against synthesized peptide derived from human CD226/DNAM-1. AA range:287-336 |
| Specificity | DNAM-1 Polyclonal Antibody detects endogenous levels of DNAM-1 protein. |
| Formulation | Liquid in PBS containing 50% glycerol, 0.5% BSA and 0.02% sodium azide. |
| Source | Polyclonal, Rabbit,IgG |
| Purification | The antibody was affinity-purified from rabbit antiserum by affinity-chromatography using epitope-specific immunogen. |
| Dilution | Western Blot: 1/500 - 1/2000. Immunohistochemistry: 1/100 - 1/300. Immunofluorescence: 1/200 - 1/1000. ELISA: 1/20000. Not yet tested in other applications. |
| Concentration | 1 mg/ml |
| Purity | ≥90% |
| Storage Stability | -20°C/1 year |
| Synonyms | CD226; DNAM1; CD226 antigen; DNAX accessory molecule 1; DNAM-1; CD antigen CD226 |
| Observed Band | 38kD |
| Cell Pathway | Cell membrane ; Single-pass type I membrane protein . |
| Tissue Specificity | Expressed by peripheral blood T-lymphocytes. |
| Function | function:Receptor involved in intercellular adhesion, lymphocyte signaling, cytotoxicity and lymphokine secretion mediated by cytotoxic T-lymphocyte (CTL) and NK cell.,PTM:Phosphorylated.,similarity:Contains 2 Ig-like C2-type (immunoglobulin-like) domains.,subunit:Interacts with PVR and PVRL2.,tissue specificity:Expressed by peripheral blood T-lymphocytes., |
| Background | This gene encodes a glycoprotein expressed on the surface of NK cells, platelets, monocytes and a subset of T cells. It is a member of the Ig-superfamily containing 2 Ig-like domains of the V-set. The protein mediates cellular adhesion of platelets and megakaryocytic cells to vascular endothelial cells. The protein also plays a role in megakaryocytic cell maturation. Alternative splicing results in multiple transcript variants. [provided by RefSeq, Jan 2015], |

**matters needing attention**

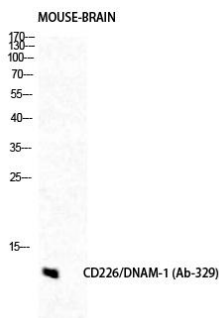
Avoid repeated freezing and thawing!

Usage suggestions

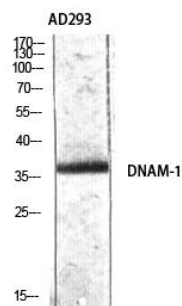
This product can be used in immunological reaction related experiments. For more information, please consult technical personnel.

Products Images

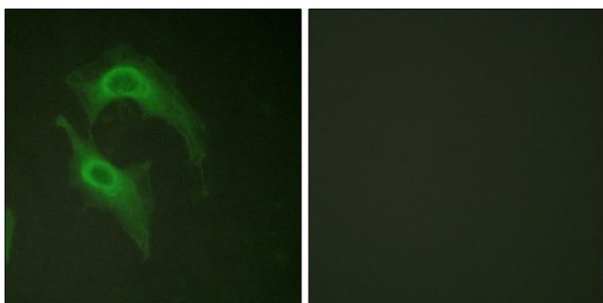
Western Blot analysis of COS7 cells using DNAM-1 Polyclonal Antibody diluted at 1:500



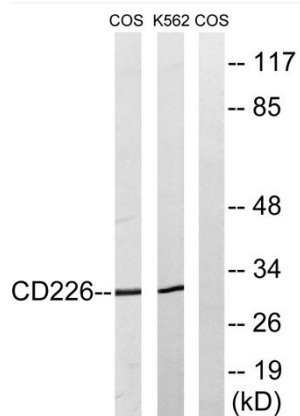
Western Blot analysis of mouse-brain cells using DNAM-1 Polyclonal Antibody diluted at 1:500



Western Blot analysis of AD293 using DNAM-1 Polyclonal Antibody diluted at 1:500



Immunofluorescence analysis of HeLa cells, using CD226/DNAM-1 Antibody. The picture on the right is blocked with the synthesized peptide.



Western blot analysis of lysates from COS7 and K562 cells, treated with PMA 125ng/ml 30', using CD226/DNAM-1 Antibody. The lane on the right is blocked with the synthesized peptide.